

# ACQMAP<sup>®</sup>

HIGH RESOLUTION IMAGING  
+ MAPPING SYSTEM



## OPEN PLATFORM STAND-ALONE SYSTEM

Compatible with a wide range of diagnostic and therapeutic tools

## ULTRASOUND ANATOMY RECONSTRUCTION

M-mode ultrasound

## BUILT TO MAP EVERY BEAT

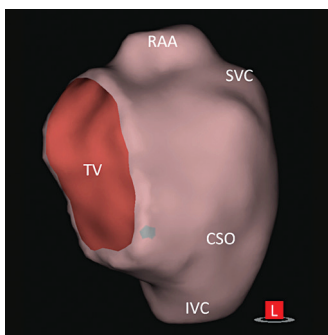
Full chamber mapping of both stable and unstable rhythms

## ULTRA HIGH RESOLUTION

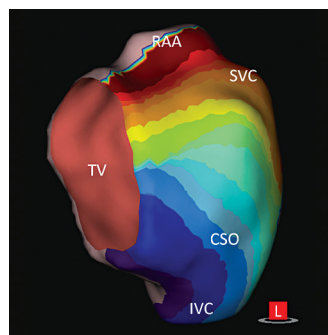
Visualize patterns beyond focal and rotation — locate non-PV targets

## MAP AS OFTEN AS NEEDED

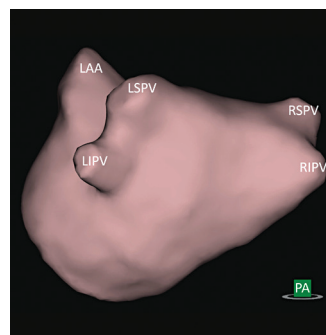
Quickly remap to assess ablation effectiveness, new arrhythmias



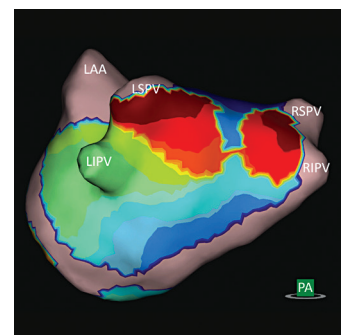
Right atrial anatomy



Charge density map — right atrial flutter



Left atrial anatomy



Charge density map — unstable atrial arrhythmia

## INDICATION FOR USE

The AcQMap System is intended for use in patients for whom electrophysiology procedures have been prescribed.

When used with the AcQMap Catheters, the AcQMap System is intended to be used to reconstruct the selected chamber from ultrasound data for purposes of visualizing the chamber anatomy and displaying electrical impulses as either dipole density-based or voltage-based maps of complex arrhythmias that may be difficult to identify using conventional mapping systems alone.

— AND —

When used with the specified Patient Electrodes, the AcQMap System is intended to display the position of AcQMap Catheters and conventional electrophysiology (EP) catheters in the heart.

### AcQMap Console Physical Characteristics

Dimensions (cm) 99 L x 58 W x 76 D  
Weight, maximum 80 kg

### AcQMap Workstation Physical Characteristics

Dimensions (cm) 179 (max) H x 90 W x 94 D  
Weight 55 Kg

### AcQMap Auxiliary Interface Box

Dimensions (cm) 13 H x 36 W x 11 D  
Weight 3 kg

### Data Collection Channels (150 channels)

Ultrasound - 48 channels  
AcQMap Catheter - 48 channels  
Auxiliary Channels - 40 channels  
Ablation Catheter - 4 channels  
Surface ECG - 10 channels

### Functional and performance Characteristics

#### Ultrasound Output

Frequency: 10 MHz +/- 400 kHz  
Maximum Voltage: 50V p-p  
Maximum Power: 1 W peak

#### Ultrasound Performance

Single operating mode  
Thermal Index less than 1.0  
Mechanical Index less than 1.0

#### Localization Output

Frequency: Variable 15 kHz to 50 kHz  
Maximum current: 1.2 mA RMS

#### ECG & EGM Input

Bandwidth: 0.05 Hz to 500 Hz  
Resolution: +/- 1uV  
Timing Accuracy: +/- 1.6 microsecond

| ORDER NUMBER | DESCRIPTION                                       |
|--------------|---|
| 900100       | AcQMap High Resolution Imaging and Mapping System |

AcQMap System includes the following components:

| ORDER NUMBER | DESCRIPTION                               | ORDER NUMBER | DESCRIPTION                                     |
|--------------|---|--------------|---|
| 800500       | AcQMap Console                            | 800255       | AcQMap Workstation Cable                        |
| 800520       | AcQMap Workstation                        | 800421       | AcQMap ECG Input Cable                          |
| 800422       | AcQMap Auxiliary Interface Box            | 800424       | AcQMap ECG Output Cable                         |
| 800522       | AcQMap ECG Out w/Snaps Cable              | 800505       | AcQMap Ablation Reference Cable                 |
| 800524       | AcQMap ECG POST Cable                     | 800508       | AcQMap Ablation Electrogram Cable               |
| 800523       | AcQMap 2mm Pin Jumper Set                 | 800431       | AcQMap → Ampere Ablation Catheter Adapter Cable |
| 800510       | Adapter Cable, AcQMap → Ablation Catheter | 800430       | AcQMap → Ampere RF Generator Adapter Cable      |
| 800511       | Maestro Adapter Cable, AcQMap → Maestro   |              |   |

| GENERATOR     | CABLE 1           | CABLE 2 | CABLE 3 | CABLE 4           |
|---------------|-------------------|---------|---------|-------------------|
| Stockert      | Biosense Webster  | N/A     | N/A     | Biosense Webster  |
| SmartAblate   | Biosense Webster  | N/A     | N/A     | Biosense Webster  |
| Abbott Ampere | St. Jude/Abbott   | 800431  | 800430  | St. Jude/Abbott   |
| Maestro       | Boston Scientific | 800510  | 800511  | Boston Scientific |

For more information please contact your Acutus Medical representative:

### ACUTUS MEDICAL, INC.

2210 Faraday Ave  
Suite 100  
Carlsbad, CA 92008  
United States  
Tel: +1-442-232-6080

For further information regarding Acutus Medical and its products, please visit [acutusmedical.com](http://acutusmedical.com)

The AcQMap System also requires use of the AcQMap Patient Electrode Kit for functionality (Order Number 800365-003) Prior to using these devices, please review the instructions for use for a complete listing of indications, contraindications, warnings, precautions, potential adverse events and directions for use. The AcQMap devices are FDA cleared.

Acutus Medical, the Acutus Medical logo and AcQMap are registered trademarks of Acutus Medical, Inc. This material is the property of Acutus Medical and its subsidiaries. Please do not copy, forward, or distribute this document. Copyright © 2019 Acutus Medical, Inc. All rights reserved.