

ACQMAP™

HIGH RESOLUTION IMAGING
+ MAPPING SYSTEM



3D IMAGING, MAPPING & NAVIGATION SYSTEM

- 3D ultra-high resolution ultrasound imaging
- Full chamber single beat mapping capability
- Enable mapping of stable and unstable rhythms

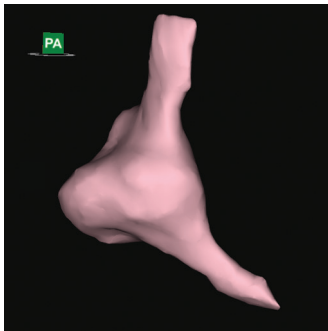
STANDALONE OPEN PLATFORM SYSTEM

- Compatible with a wide range of diagnostic and therapeutic tools
- Maintain customer preference for ablation and mapping catheters

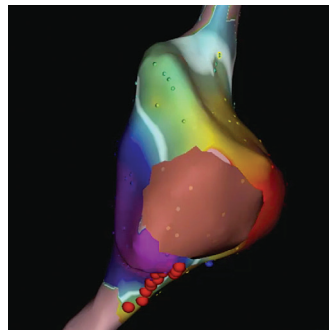
MULTIPLE MAPPING MODES — BUILT TO MAP EVERY BEAT

- Contact mapping for simple anatomical ablations
- Hover mapping with SuperMap for multi-morphic, repetitive rhythms
- Single position non-contact mapping of unstable arrhythmias

CONTACT MAPPING

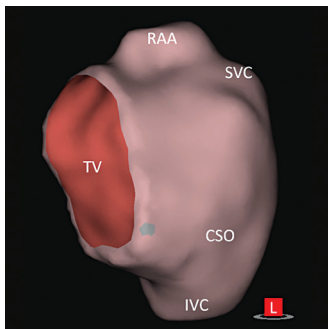


Right atrial anatomy

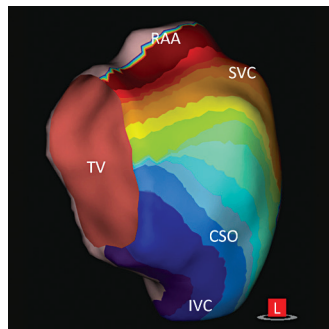


Electroanatomic map

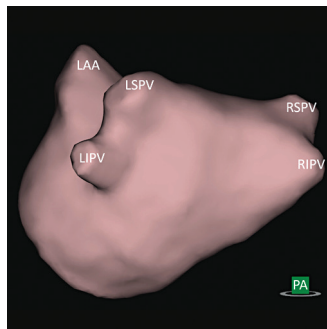
NON-CONTACT MAPPING



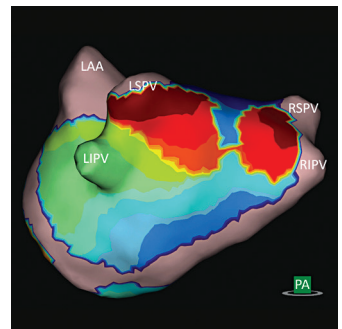
Right atrial anatomy



Charge density map — right atrial flutter



Left atrial anatomy



Charge density map — unstable atrial arrhythmia

INDICATION FOR USE

The AcQMap System is intended for use in patients for whom electrophysiology procedures have been prescribed.

When used with the AcQMap Catheters, the AcQMap System is intended to be used to reconstruct the selected chamber from ultrasound data for purposes of visualizing the chamber anatomy and displaying electrical impulses as either charge density-based or voltage-based maps of complex arrhythmias that may be difficult to identify using conventional mapping systems alone.

— AND —

When used with the specified Patient Electrodes, the AcQMap System is intended to display the position of AcQMap Catheters and conventional electrophysiology (EP) catheters in the heart.

— OR —

When used with conventional electrophysiology catheters, the AcQMap System provides information about the electrical activity of the heart and about catheter location during the procedure.

AcQMap Console Physical Characteristics

Dimensions (cm) 99 L x 58 W x 76 D
Weight, maximum 80 kg

AcQMap Workstation Physical Characteristics

Dimensions (cm) 179 (max) H x 90 W x 94 D
Weight 55 Kg

AcQMap Auxiliary Interface Box

Dimensions (cm) 13 H x 36 W x 11 D
Weight 3 kg

Data Collection Channels (150 channels)

Ultrasound - 48 channels
AcQMap Catheter - 48 channels
Auxiliary Channels - 40 channels
Ablation Catheter - 4 channels
Surface ECG - 10 channels

Functional and Performance Characteristics

Ultrasound Output

Frequency: 10 MHz +/- 400 kHz
Maximum Voltage: 50 Vp-p
Maximum Power: 1 W peak

Ultrasound Performance

Single operating mode
Thermal Index less than 1.0
Mechanical Index less than 1.0

Localization Output

Frequency: Variable 15 kHz to 50 kHz
Maximum current: 1.2 mA RMS

ECG & EGM Input

Bandwidth: 0.05 Hz to 500 Hz
Resolution: +/- 1 μ V
Timing Accuracy: +/- 1.6 microsecond

ORDER NUMBER	DESCRIPTION
900100	AcQMap High Resolution Imaging and Mapping System

AcQMap System includes the following components:

ORDER NUMBER	DESCRIPTION	ORDER NUMBER	DESCRIPTION
800500	AcQMap Console	800255	AcQMap Workstation Cable
800520	AcQMap Workstation	800421	AcQMap ECG Input Cable
800604	AcQMap Auxiliary Interface Box	800531	AcQMap ECG Output Cable
800522	AcQMap ECG Out w/Snaps Cable	800505	AcQMap Ablation Reference Cable
800524	AcQMap ECG POST Cable	800508	AcQMap Ablation Electrogram Interface Cable
800523	AcQMap 2mm Pin Jumper Set	800430	AcQMap → Ampere Ablation Catheter Adapter Cable
		800431	AcQMap → Ampere RF Generator Adapter Cable

GENERATOR	CABLE 1	CABLE 2	CABLE 3	CABLE 4
Stockert	Biosense Webster	N/A	N/A	Biosense Webster
SMARTABLATE®	Biosense Webster	N/A	N/A	Biosense Webster
Abbott Ampere™	St. Jude/Abbott	800430	800431	St. Jude/Abbott

AcQMap System also requires use of the AcQMap Patient Electrode Kit for functionality:

ORDER NUMBER	USED WITH	DESCRIPTION	CONTENTS (PER KIT)
800365-003 (Box of 5)	AcQMap System 900100	AcQMap Patient Electrode Kit	6 - Localization Dispersive Electrodes; 1 - Patient Return Electrode; 15 - Repositionable Monitoring Electrodes

For more information please contact your Acutus Medical representative:

ACUTUS MEDICAL, INC.
2210 Faraday Ave
Suite 100, Carlsbad, CA 92008
United States
Phone: 888-202-8151
acutus.com

Prior to using these devices, please review the Instructions for Use for a complete listing of indications, contraindications, warnings, precautions, potential adverse events and directions for use. The AcQMap devices are CE Marked and FDA cleared. acutus.com/patents

Acutus Medical®, Acutus®, the Acutus Medical logo, and AcQMap® are registered trademarks of Acutus Medical, Inc. This material is the property of Acutus Medical and its subsidiaries. Please do not copy, forward, or distribute this document. Copyright © 2021 Acutus Medical, Inc. All rights reserved.