

# ACQMAP™

HIGH RESOLUTION IMAGING  
+ MAPPING SYSTEM



## OPEN PLATFORM STAND-ALONE SYSTEM

- Compatible with a wide range of diagnostic and therapeutic tools

## 3D IMAGING

- Ultrasound anatomy reconstruction
- Ultra high resolution

## BUILT TO MAP EVERY BEAT — TRILOGY OF MAPPING MODALITIES

- Contact for simple, repetitive rhythms
- SuperMap for multi-morphic and multi-circuit repetitive rhythms
- Non-contact for chaotic and transient rhythms

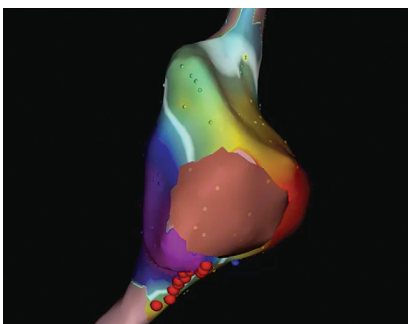
## HIGH DEFINITION MAPS IN <3 MINUTES

- Efficient, initial rhythm diagnosis
- Substrate characterization
- Assessment of ablation effectiveness

Stable, repetitive rhythms



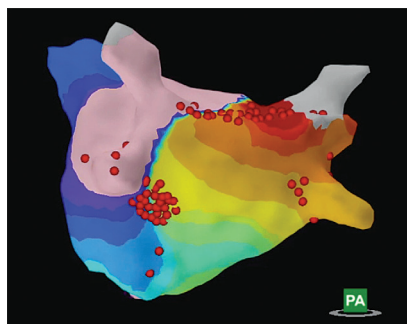
Contact Mapping



Stable and slightly variable repetitive rhythms



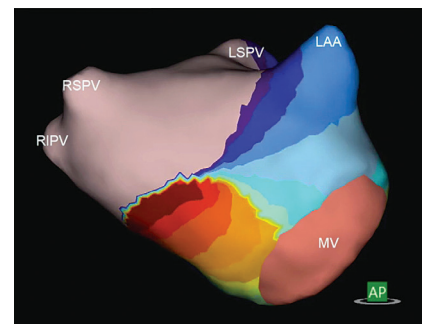
SuperMap



Chaotic rhythms



Non-Contact Mapping



## INDICATION FOR USE

The AcQMap System is intended for use in patients for whom electrophysiology procedures have been prescribed.

When used with the AcQMap Catheter, the AcQMap System is intended to be used in the right and/or left atria to visualise the selected chamber and display electrical impulses.

— AND —

When used with the specified Patient Electrodes, the AcQMap System is intended to display the position of the AcQMap Catheter and conventional electrophysiology (EP) catheters in the heart.

— OR —

When used with conventional electrophysiology catheters, the AcQMap System provides information about the electrical activity of the heart and about catheter location during the procedure

### AcQMap Console Physical Characteristics

Dimensions (cm) 99 L x 58 W x 76 D  
Weight, maximum 80 kg

### AcQMap Workstation Physical Characteristics

Dimensions (cm) 179 (max) H x 90 W x 94 D  
Weight 55 Kg

### AcQMap Auxiliary Interface Box

Dimensions (cm) 13 H x 36 W x 11 D  
Weight 3 kg

### Data Collection Channels (150 channels)

Ultrasound - 48 channels  
AcQMap Catheter - 48 channels  
Auxiliary Channels - 40 channels  
Ablation Catheter - 4 channels  
Surface ECG - 10 channels

### Functional and performance Characteristics

#### Ultrasound Output

Frequency: 10 MHz +/- 400 kHz  
Maximum Voltage: 50 Vp-p  
Maximum Power: 1 W peak

#### Ultrasound Performance

Single operating mode  
Thermal Index less than 1.0  
Mechanical Index less than 1.0

#### Localization Output

Frequency: Variable 15 kHz to 50 kHz  
Maximum current: 1.2 mA RMS

#### ECG & EGM Input

Bandwidth: 0.05 Hz to 500 Hz  
Resolution: +/- 1 uV  
Timing Accuracy: +/- 1.6 microsecond

ORDER NUMBER	DESCRIPTION
900100	AcQMap High Resolution Imaging and Mapping System

AcQMap System includes the following components:

ORDER NUMBER	DESCRIPTION	ORDER NUMBER	DESCRIPTION
800500	AcQMap Console	800255	AcQMap Workstation Cable
800520	AcQMap Workstation	800532	AcQMap ECG Input Cable
800604	AcQMap Auxiliary Interface Box	800424	AcQMap ECG Output Cable
800525	AcQMap ECG Out w/Snaps Cable	800505	AcQMap Ablation Reference Cable
800526	AcQMap ECG POST Cable	800508	AcQMap Ablation Electrogram Interface Cable
800523	AcQMap 2mm Pin Jumper Set	800430	AcQMap → Ampere™ Ablation Catheter Adapter Cable
		800431	AcQMap → Ampere RF Generator Adapter Cable

GENERATOR	CABLE 1	CABLE 2	CABLE 3	CABLE 4
Stockert	Biosense Webster	N/A	N/A	Biosense Webster
SMARTABLATE®	Biosense Webster	N/A	N/A	Biosense Webster
Abbott Ampere™	St. Jude/Abbott	800430	800431	St. Jude/Abbott

AcQMap System also requires use of the AcQMap Patient Electrode Kit for functionality:

ORDER NUMBER	USED WITH	DESCRIPTION	CONTENTS (PER KIT)
800365-003 (Box of 5)	AcQMap System 900100	AcQMap Patient Electrode Kit	6 - Localization Dispersive Electrodes; 1 - Patient Return Electrode; 15 - Repositionable Monitoring Electrodes

**For more information please contact your Acutus Medical representative:**

### ACUTUS MEDICAL NV

Ikaroslaan 25  
1930 Zaventem  
Belgium  
Phone: +32 2 669 75 00  
FAX: +32 2 669 75 01  
acutus.com

Prior to using these devices, please review the Instructions for Use for a complete listing of indications, contraindications, warnings, precautions, potential adverse events and directions for use. The AcQMap devices are CE Marked and FDA cleared. [acutus.com/patents](http://acutus.com/patents)

Acutus Medical, the Acutus Medical logo and AcQMap are registered trademarks of Acutus Medical, Inc. This material is the property of Acutus Medical and its subsidiaries. Please do not copy, forward, or distribute this document. Copyright © 2020 Acutus Medical, Inc. All rights reserved.